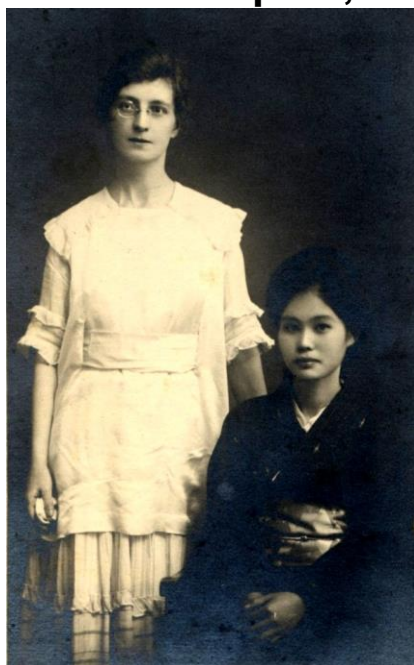


**The Burke Library Archives, Columbia University Libraries,
Union Theological Seminary, New York**

Missionary Research Library Archives: Section 7

Finding Aid for

Sarah S. Andrews Papers, 1916 – 1961



MRL 7: Sarah S. Andrews Papers, box 1, folder1, The Burke Library at Union Theological Seminary, Columbia University in the City of New York.

Finding Aid prepared by: Gregory Adam Scott, June 2009.

Reviewed and updated by Sarah Davis, May 2014 with financial support from the Henry Luce Foundation

Summary Information

Creator: Sarah S. Andrews, 1892 - 1961
Title: Sarah S. Andrews Papers
Inclusive dates: [1916 - 1961]
Bulk dates: [192? - 193?]
Abstract: Independent missionary to Numazu City, Japan, 1916-1961. Collection contains photographs and correspondence regarding photographs.
Size: 1 box, 0.25 linear feet
Storage: Onsite storage
Repository: The Burke Library
Union Theological Seminary
3041 Broadway
New York, NY 10027
Email: burkearchives@library.columbia.edu

Administrative Information

- Provenance:** The letters in folder #2 detail the provenance of the photographs. They were discovered in the drawer of a desk donated to a Goodwill in Nashville, TN around August, 1977. They were sent to Charles Deweese, of the Historical Commission of the Southern Baptist Convention, who forwarded them to the MRL in September, 1977. The MRL (then part of the UTS library) acknowledged receipt of the “photographs and memorabilia” in January, 1978.
- Access:** Archival papers are available to registered readers for consultation by appointment only. Please contact archives staff by email to burkearchives@library.columbia.edu, or by postal mail to The Burke Library address on page 1, as far in advance as possible. [Burke Library Staff](#) is available for inquiries or to request a consultation on archival or special collections research.
- Access Restrictions:** The collection is unrestricted to readers. Certain materials however are in a fragile condition, and this may necessitate restriction in handling and copying.
- Preferred Citation:** Item description, MRL 7: Sarah S. Andrews Papers, box # and folder #, The Burke Library at Union Theological Seminary, Columbia University in the City of New York

Biography

Andrews was born on November 26, 1892 in Dickson, Tennessee. Her parents had started a congregation in their home, and at an early age she had heard J. M. McCaleb (1862-1953), on furlough from missionary work in Japan, speak on his work in Japan. Andrews studied at Dickson College and Peabody College before arriving in Japan as an independent missionary on January 16, 1916. During her mission work she supported the building of churches in Shizuoka, Shimizu 清水, Okitsu 興津 and Numazu. She was imprisoned during the Second World War and suffered from tuberculosis. She was saved by a soldier who had arrived with MacArthur’s occupation force in 1945. Her tomb was established with the help of Oiha, an orphan who had been cared for by Andrews like a mother.

One of the materials in the collection is a photograph of Andrews’ tomb in Numazu City 沼津市, Shizuoka prefecture 静岡県, Japan. The card containing the photograph includes a transcription of the tomb inscription as well as a translation into English.

An article in the on-line magazine *Carolina Messenger* by Hugo McCord <<http://www.carolinamessenger.com/images/089904.pdf>> relates some information that the author learned while in Dickson, TN in 1962.

Collection Scope and Content Note

None of the photographs are dated, although a few have names of “Japanese helpers” photographed with Sarah S. Andrews. One is given as Iki Naemura, another as Oiki. This was possibly the “Oiha” mentioned in the McCord article. One photograph shows Andrews with a woman identified as “Miss Cypert.”

Processing

Metal clips and staples were removed from materials and folded items were flattened. Photographs were placed in Mylar enclosures, new acid-free folders and box.

In 2014, the collection and finding aid were updated as part of the Henry Luce Foundation Grant.

Further Sources

More information about Sarah S. Andrews can be found at [Pepperdine University](#) in California.

The Burke Library also offers many other collections related to missions in Japan. These are available in section 7 of the [Missionary Research Library Archives](#).

Contents list

Box	Folder	Contents
1	1	Photographs, Postcard, Photograph of Andrews' Tomb
1	2	Photograph-Related Correspondence, 1977 - 1978