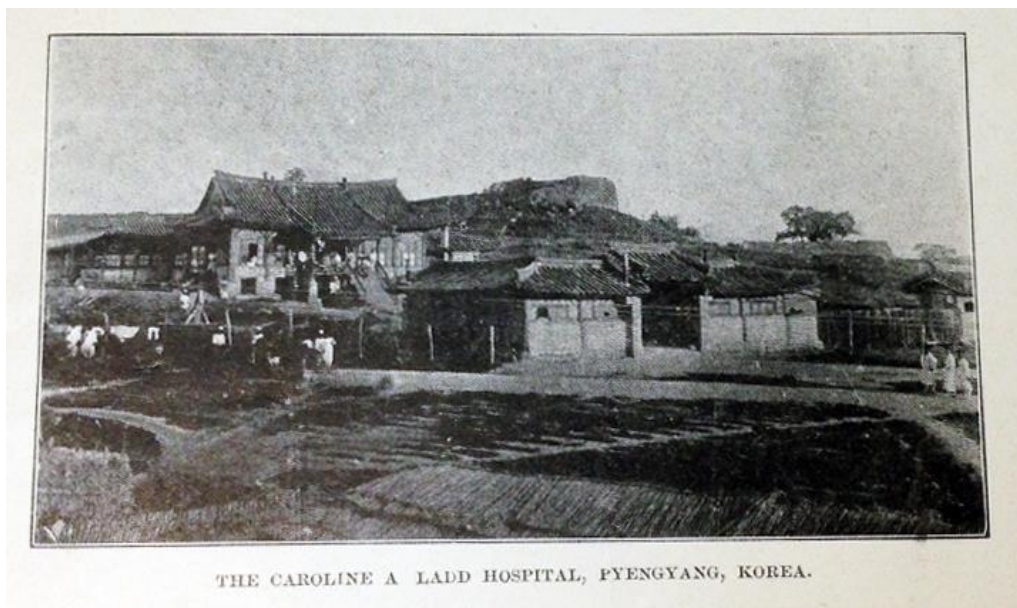


**The Burke Library Archives, Columbia University Libraries,
Union Theological Seminary, New York**

Missionary Research Library Archives: Section 8

Finding Aid for

Korea General Papers, 1904 – 1964



Information Pamphlet, the Caroline A. Ladd Hospital. Credit to: MRL 8: Korea General Papers, box 2, folder 1, The Burke Library at Union Theological Seminary, Columbia University in the City of New York.

Finding Aid prepared by: Aram Bae, October 2007

Substantially Reviewed and Updated by Brigette C. Kamsler, August 2014 with financial support from the Henry Luce Foundation

Summary Information

Creator: Missionary Research Library
Title: Korea General Papers
Inclusive dates: 1904 – 1964
Bulk dates: 1909 – 1913
Abstract: Reports, correspondence, articles on Foreign Missions in Korea.
Size: 3 boxes, 0.75 linear feet
Storage: Onsite storage
Repository: The Burke Library
Union Theological Seminary
3041 Broadway
New York, NY 10027
Email: burkearchives@library.columbia.edu

Administrative Information

- Provenance:** Originally part of the independent Missionary Research Library, under the direction of Charles H. Fahs, who was research assistant to John R. Mott and curator of the Missionary Research Library from its foundation in 1914 until 1948, these records were moved with the MRL to the Brown Memorial Tower of Union Theological Seminary in 1929. In 1976 the records were accessioned to the Burke Library archives with the closure of the MRL. In 2014, a small group of records were added to the collection.
- Access:** Archival papers are available to registered readers for consultation by appointment only. Please contact archives staff by email to burkearchives@library.columbia.edu, or by postal mail to The Burke Library address on page 1, as far in advance as possible. [Burke Library staff](#) is available for inquiries or to request a consultation on archival or special collections research.
- Access Restrictions:** The collection is unrestricted to readers. Certain materials however are in a fragile condition, and this may necessitate restriction in handling and copying.
- Preferred Citation:** Item description, MRL 8: Korea General Papers, box #, folder #, The Burke Library at Union Theological Seminary, Columbia University in the City of New York.

History

Christianity in Korea can be traced back for centuries, with Protestantism and Catholicism being the two main sects of Christianity in place. A variety of missionary organizations have interests in Korea, such as the Board of Foreign Missions of the Presbyterian Church of the United States and the Methodist Episcopal Church. The first Presbyterian missionary arrived in Korea in the mid-1800s, although it grew slowly up until World War II.

The major concerns for missions in Korea, as outlined by the Continuation Committee of the World Missionary Conference, were: evangelization, the Christian Church, Christian leadership, training and efficiency of missionaries, education, literature, occupation of the field, cooperation and medical work.

Missionaries in Korea have left a lasting impact on the nation, starting hundreds of hospitals and universities. During the Japanese occupation of Korea, Christianity became intertwined with Korean Nationalism. After the Korean War, the majority of the Christians moved to South Korea. The religion is still popular and widely followed.

Sources: From the records themselves and:

Moffett, Samuel Hugh. *The Christians in Korea*. New York: Friendship Press, 1962.

Paik, L. George. *The History of Protestant Missions in Korea, 1832-1910*. Korea: Union Christian College Press, 1929.

Collection Scope and Content Note

The collection originally contained two typed reports and one letter describing the progress of Foreign Mission work in Korea during the early 20th century. These are housed in Box 1.

The additional materials in Box 2 cover a variety of aspects of missions in Korea. Education in Korea, development of industry, cultivating leaders and medical missions are all topics explored in the records. There are a number of records from a conference held in Seoul in the early part of the century. This may be part of the Continuation Committees from the World Missionary Conference, but this could not be confirmed from the records.

The box also contains copies of personal, private letters from missionaries in Korea. These letters were not distributed widely and discuss in detail events the missionaries experienced. L. T. Newland in Kwangju; Margaret P. Boggs in Chungju; Margaret Pritchard in Kwangju; Janet Crane in Junten; Lloyd K. Boggs at the Chungju Hospital; Kellum and Ruth Levie in Kwangju; W. F. Bull in Kunsan; and R. M. Wilson of Soonchun are just a few of the missionaries with correspondence.

Processing

Metal clips and staples were removed from materials and folded items were flattened. Materials were placed in new acid-free folders and boxes.

A group of unprocessed and unorganized material was added to the collection in 2014 as part of the Henry Luce Foundation project. Up until 2014, the entirety of the collection consisted of the records in folders 1-3, and these have been kept in their own box of Box 1. The remaining folders were integrated into the collection in August 2014 and are housed in Box 2.

Further Sources

The Burke Library offers many other collections related to specific events or individuals who spent time in Korea carrying out mission work. The Burke also offers collections that touch on specific events in Korea such as the Korean Conspiracy Case and the Korean Independence Outbreak. For more information, please see the [Burke Archives website](#).

Contents list

Box	Folder	Contents
1	1	Report on Country Day Schools and Pyeng Yang's Boy School, by John Z. Moore, 192[?]
1	2	Historical Sketch of Mission of Southern Methodist Episcopal Church, by J. Robert Moose, 1912
1	3	Letter from Arthur J. Brown to Komatsu, director of Bureau of Foreign Affairs, Seoul, Jun 16, 1915
2	1	Pamphlets, 1904-1913
2	2	Industry and Reform in Korea, 1907-1909
2	3	Education in Korea typescripts, 1909
2	4	Pyeng Yeng Union College, 1909-1910
2	5	Seoul Conference, [1913?]: Opening, Business, Financial
2	6	Seoul Conference, [1913?]: Occupation in the Field, Medical Missions
2	7	Seoul Conference, [1913?]: Church, Evangelization, Leadership
2	8	Seoul Conference, [1913?]: Education, Literature
2	9	Seoul Conference, [1913?]: Discussion of Findings
2	10	Christian Colleges and Churches, 1938; [19??]
2	11	Personal Correspondence from Missionaries, 1939-1940
2	12	Correspondence, 1943-1947
2	13	Post-War Korea, FMCNA and Board of Missions and Church Extension of the Methodist Church, 1944
2	14	Korean Language Characters, [19??]
2	15	Map of Korea showing Stations of Federated Missions, Missionaries of United Church of Canada reside in Underlined Stations, published by Young People's Missionary Education, [19??]
3	1	Correspondence, 1943-1964
3	2	Publications and Reports [19??]
3	3	Korea Church Workers Academy, 1964