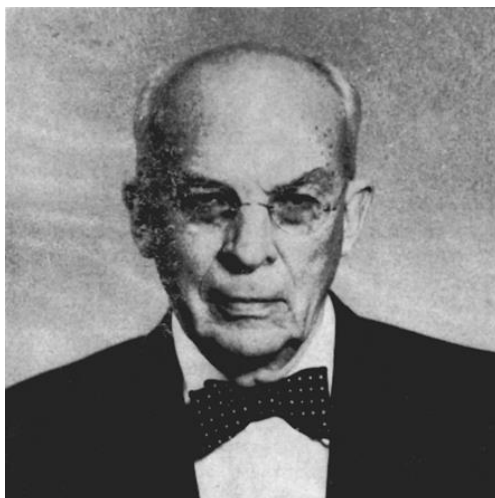


**The Burke Library Archives, Columbia University Libraries,  
Union Theological Seminary, New York**

Missionary Research Library Archives: Section 6

Finding Aid for

**Earl Herbert Cressy Papers, 1918 – 1960**



Portrait from Cressy's *Understanding China*, 1957

Finding Aid prepared by: Gregory Adam Scott, July 2009

Reviewed and Updated by Brigette C. Kamsler, April 2014 with financial support from the Henry Luce Foundation

**Summary Information**

Creator: Earl Herbert Cressy, 1883 - 1979

Title: Earl Herbert Cressy Papers

Inclusive dates: 1918 - 1960

Bulk dates: 1930 - 1933

Abstract: Earl Herbert Cressy, Central China Famine Relief Committee, Executive secretary of Council of Christian Colleges in China, Associate general secretary of National Christian Council of China. Christian Education in China; Chinese Religion; Hangzhou 杭州; Wuchang 武昌; Hankou 漢口. Reports, drafts, research schedules, charts, surveys, maps.

Size: 4 manuscript boxes, 3 OS boxes, 8.00 linear feet

Storage: Onsite storage

Repository: The Burke Library  
Union Theological Seminary  
3041 Broadway  
New York, NY 10027

Email: [burkearchives@libraries.cul.columbia.edu](mailto:burkearchives@libraries.cul.columbia.edu)

### Administrative Information

- Provenance:** Originally part of the independent Missionary Research Library, in 1976, the records were accessioned to the Burke Library archives with the closure of the MRL.
- Access:** Archival papers are available to registered readers for consultation by appointment only. Please contact archives staff by email to [burkearchives@libraries.cul.columbia.edu](mailto:burkearchives@libraries.cul.columbia.edu), or by postal mail to The Burke Library address on page 1, as far in advance as possible. Burke Library staff is available for inquiries or to request a consultation on archival or special collections research.
- Access Restrictions:** The collection is unrestricted to readers. Certain materials however are in a fragile condition, and this may necessitate restriction in handling and copying.
- Preferred Citation:** Item description, MRL6: Earl Herbert Cressy Papers, box #, folder #, The Burke Library at Union Theological Seminary, Columbia University in the City of New York.

### Biography

Earl Herbert Cressy was born in Lacon, Illinois on June 15, 1883. He graduated from the University of Minnesota in 1907 and Rochester Theological Seminary in 1910. That same year he traveled to Hanyang 漢陽 in China to work as a missionary under the auspices of the American Board of Foreign Missions. He worked with the Central China Famine Relief Committee in 1912 to solicit direct support for the needy, and from 1916 lived in Hangzhou, where he was principal of Wayland Academy. In 1925 he was the executive secretary of the Council of Christian Colleges in China, and associate general secretary of the National Christian Council of China.

Cressy married Margaret Millie, [18??]-[195?] in 1927, and ultimately left China in 1946. In the 1950s he was involved with Christianity in Thailand. He later taught at the Kennedy School of Missions at Hartford, and was director of the Urban Church Research Center for Asia in Claremont, CA in the 1960s. He passed away in 1979.

Cressy produced several books, including *China Marches Toward the Cross* (1938), *Daughters of Changing Japan* (1955) and *Understanding China* (1957).

### Collection Scope and Content Note

This collection of papers is focused on Cressy's research into Chinese religious institutions, mostly in Hangzhou. He was assisted by a Chinese researcher who gathered information on hundreds of religious institutions in the region. Cressy's research put him into contact with contemporary Chinese religious organizations such as the Buddhist Right Faith Society (佛教正信會), the Wuchang Buddhist Seminary (武昌佛學院), the Hubei Confucian Society (湖北孔道會), and the Hankou Buddhist Society (漢口佛教會). The material includes tabulations, maps, and summaries of data gathered during the period 1930-1931.

Note on Chinese Terms: Where a Romanized Chinese term forms part of an original title, the older style of romanization has been preserved (e.g. Hangchow).

Otherwise, in descriptive notes and terms translated from the original Chinese, the current standard pinyin system has been used (e.g. Hangzhou).

### **Processing**

Metal clips and staples were removed from materials and folded items were flattened. Materials were placed in new acid-free folders. Acidic items were photocopied on to acid-free paper and the originals separated by interleaving with acid-free paper. Any items in an advanced state of deterioration were placed in Mylar envelopes.

Oversized materials from boxes 2-4 were unfolded and moved to oversized boxes 5 and 6. A large woodblock print map from box 3, folder 4 was digitally imaged and moved to tube box 7.

The collection was updated in 2014 as part of the Henry Luce Foundation Grant. Folders were placed in new acid-free boxes at this time.

### **Further Sources**

The Burke Library contains other collections with further material from the Cressy Papers, including MRL12: Laymen's Foreign Missions Inquiry Records and MRL6: Higher Education Institutions in China. These collections are open for use by researchers with more information available online at: <http://library.columbia.edu/locations/burke/archives/mrl.html>.

The main collection of Cressy's papers is held at the American Baptist Historical Society, Valley Forge, PA. See: <http://abhsarchives.org/>.

Additionally, Case Memorial Library Archives contains 2 folders of material on Cressy. This can be accessed at: <http://www.orange.lioninc.org/>.

## Contents list

Box	Folder	Contents
1	1	Chinese Religion and Culture: Research Notes, Translations, [193?]
1	2	<i>Organization Law of Municipality</i> , ms transl. by D. Shen, [193?]
1	3	<i>History of Buddhism in China</i> , Chapters 17-18, Draft, [193?]
1	4	<i>Study of Indigenous Religions of China as a Background to Christian Missions</i> by Cressy, Typewritten Draft, [193?]
1	5	<i>Indigenous Religions of China</i> - Appendix, [193?]
1	6-7	<i>Religion in Hangchow</i> , Typewritten Draft; Research Materials, [193?]
2	1	<i>Study of Religious Institutions in Hangchow</i> [SRIH]: Charts, [1931?]; <i>Revised Illustrated Explanation of Districts, Neighborhoods, and Villages of Hangzhou City</i> (杭州市改編區坊閭鄰圖說), 1931
2	2-3	SRIH: Draft Sections, 1931
3	1-3	Buddhist Monasteries and Temples in Hankou Region: Research Schedules, 1931
3	4	Buddhist Institutions in Hankou and Wuchang: Research Notes, Primary Source Materials in Chinese, Correspondence, 1931; Woodblock Map, [192?/193?] [CD Digital Image – Restricted original in Box 7]
3	5	Correspondence, 1931-1935
3	6	Buddhist Institutions in Hankou and Wuchang: Duplicated Research Materials from Y.D. Bao, List of Names from Qiantang County Gazetteer (錢塘縣志), [193?]
4	1	<i>Study in History of Buddhism in Burma ...Pagan period</i> , by U Zaw Htun, Ph.D. thesis, Visva Bhavati University, 1954
4	2-3	<i>Who's Who in China</i> , 1918 – 1919; 1920
4	4	<i>Who's Who in China</i> (Biographies of Chinese), 3 <sup>rd</sup> Ed. Supplement [1928?]
4	5-6	Japanese Buddhist Organizations: Pamphlets, Books, 1950-1953
4	7	<i>Disentanglement of Church and State</i> , by R.B. Silliman, 1959; Correspondence, [195?]
4	8	<i>City Churches in East Asia</i> , Studies 7 - 9, 1960
5 OS	1	Buddhistic Laws ( <i>lüzong</i> ): Ms Notes, English/Chinese, [193?]
5 OS	2	<b>[FRAGILE]</b> <i>Study of Religious Institutions in Hangchow</i> [SRIH]: Survey Materials on Buddhist Monasteries, [1934?]
5 OS	3	<b>[FRAGILE]</b> SRIH: Survey Materials on Temples, [1934?]
5 OS	4	<b>[FRAGILE]</b> SRIH: Survey Materials on Nunneries, [1934?]
5 OS	5	<b>[FRAGILE]</b> SRIH: Classification Chart of Buddhist Monasteries, [1934?]
5 OS	6	SRIH: Classification Chart of Buddhist and Daoist Temples, [193?]
5 OS	7-8	SRIH: Survey Materials on Buddhist and Daoist Temples, [193?]
5 OS	9	SRIH: Monastery Chart: History, [193?]

Box	Folder	Contents
6 OS	1	Copies of Maps from <i>Revised Illustrated Explanation of Districts, Neighborhoods, and Villages of Hangzhou City</i> (杭州市改編區坊閭鄰圖說), [193?]
6 OS	2	Population and District Chart of Hangzhou, 1930
6 OS	3	Manuscript Maps of Hangzhou City and Neighborhoods, [1930?]
6 OS	4	Maps of Hangzhou Region, [193?]
6 OS	5	Map of West Lake, Hangzhou, [193?]
6 OS	6	Japanese Buddhist Poster, 1952
6 OS	7	<i>Understanding China</i> , 1957
7 [Tube Box]		<b>[RESTRICTED]</b> Woodblock Print Map of Taishan, China, [192?/193?] [Digital Image Available in Box 3, Folder 4]