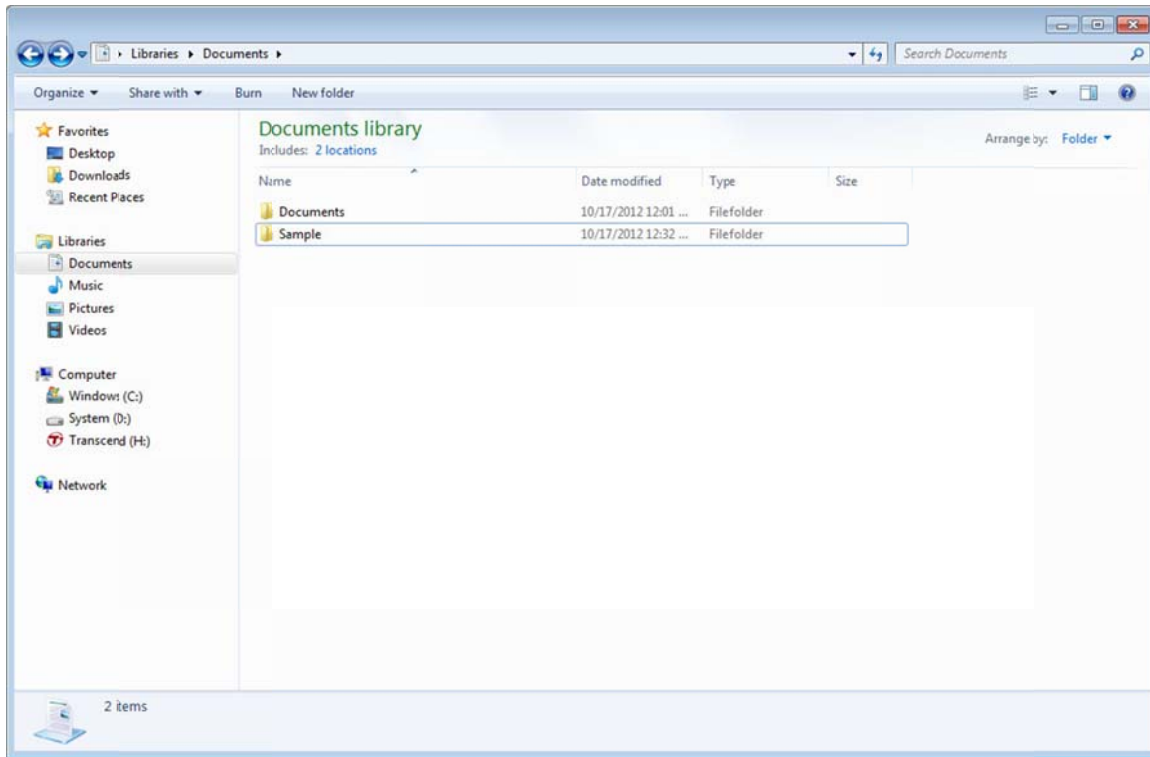
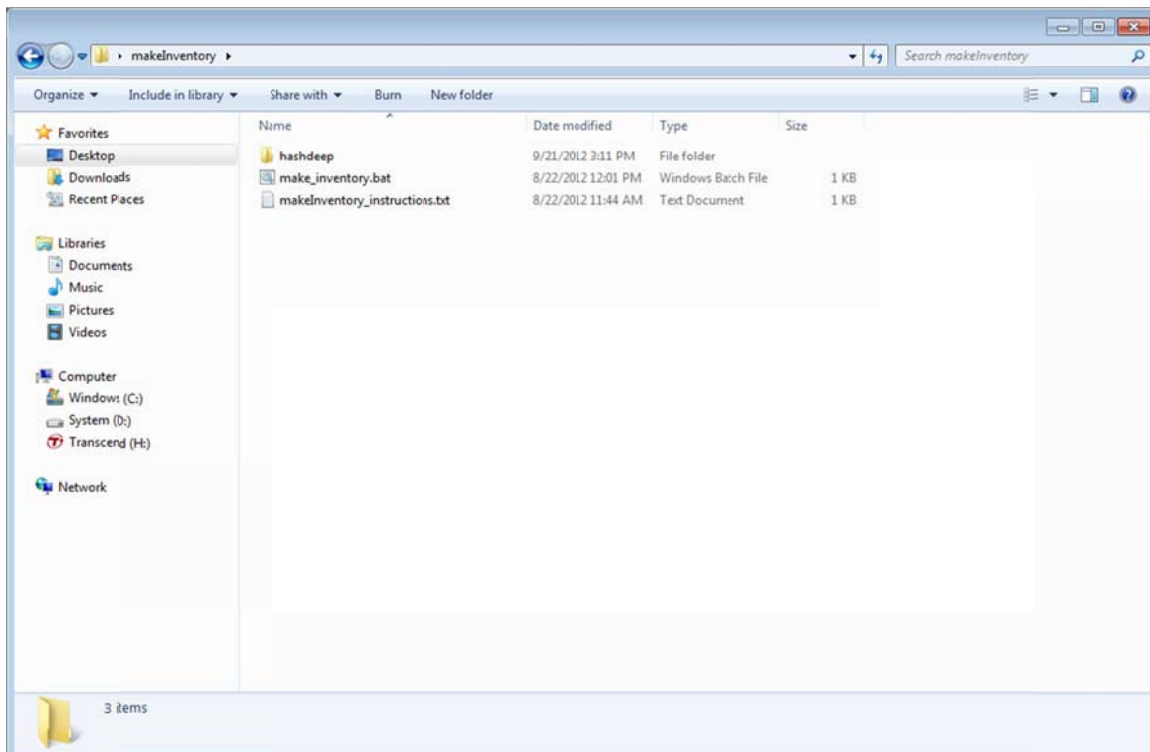


Running makeInventory program on the Sample directory

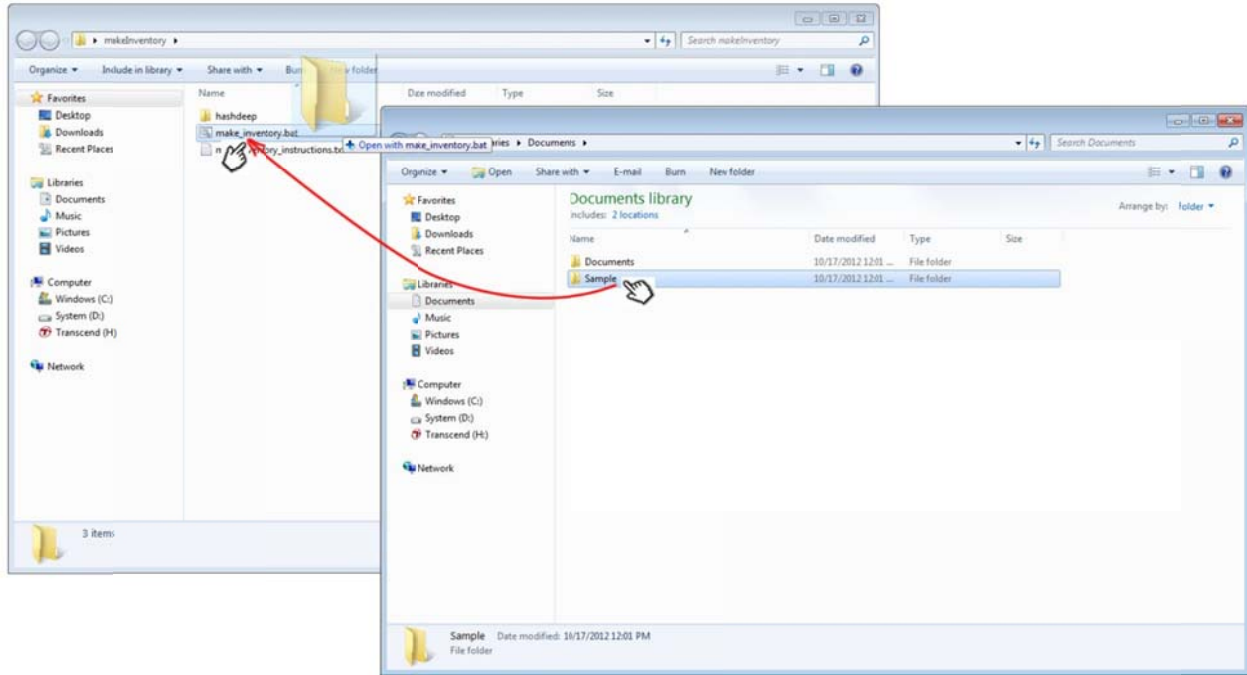
1. Open Windows Explorer and navigate to the Sample directory. Leave the window open.



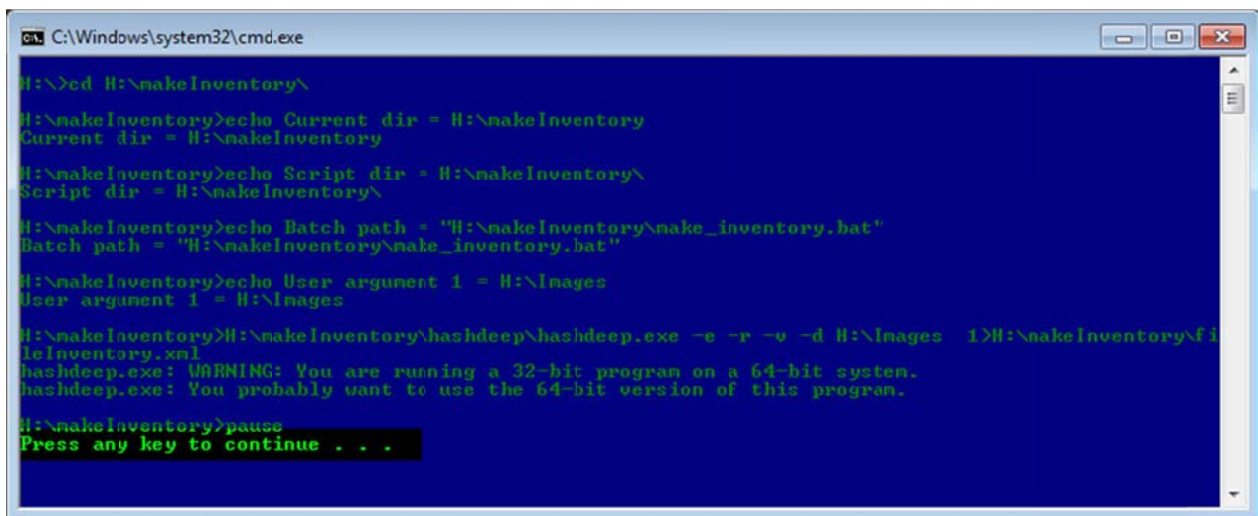
2. Open the content of the makeInventory program in another Windows Explorer window. Leave this window open, too.



3. Drag and drop the whole Sample directory into make_inventory.bat file as shown in the picture:
 - Move the mouse cursor to the Sample directory name (this will highlight the directory name)
 - Press, and hold down, the left button on the mouse to "grab" the directory
 - "Drag" the directory to the "make_inventory.bat" file (this will highlight the file name)
 - "Drop" the directory by releasing the button



4. Wait till "Press any key to continue" prompt appears in the cmd.exe window.



5. fileInventory.xml file will appear in makeInventory folder. Make sure that fileInventory.xml is not empty.
6. You can double-check that the program works correctly by opening the fileInventory.xml file in a browser:
 - Open a browser (e.g. Internet Explorer, Mozilla Firefox)

- click on File
- from the drop-down menu select Open File
- navigate to the fileInventory.xml file
- click Open.

The content of the fileInventory.xml file should look similar to the pictures below (the main indicator that the program ran successfully is that the names of the files contained in the Sample directory appear in the document):

- in Mozilla Firefox

```

- <dfxml xmloutputversion="1.0">
- <metadata>
  <dc:type>Hash List</dc:type>
</metadata>
- <creator version="1.0">
  <program>MD5DEEP</program>
  <version>4.1</version>
  - <build_environment>
    <compiler>GCC 4.7</compiler>
  </build_environment>
  - <execution_environment>
    - <command_line>
      C:\Users\ds2057\Desktop\makeInventory\hashdeep\hashdeep.exe -e -r -v -d C:\Users\ds2057\Documents\Sample
    </command_line>
    <start_time>
    </start_time>
  </execution_environment>
  </creator>
- <configuration>
  - <algorithms>
    <algorithm name="md5" enabled="1"/>
    <algorithm name="sha1" enabled="0"/>
    <algorithm name="sha256" enabled="1"/>
    <algorithm name="tiger" enabled="0"/>
    <algorithm name="whirlpool" enabled="0"/>
  </algorithms>
  </configuration>
- <fileobject workerid="0">
  - <filename>
    C:\Users\ds2057\Documents\Sample\Assessment_of_Risk_Factors.doc
  </filename>
  <filesize>65024</filesize>
  <ctime/>
  <mtime/>
  <atime/>
  <hashdigest type="MD5">bf47c4bc65dbad3606ed0e735cbb5a14</hashdigest>
  - <hashdigest type="SHA256">
    e8b00d2a503d1b5fca3cfd4cae47a7ba1ab339573e327e37f2e00f0faeba154
  </hashdigest>
  </fileobject>
- <fileobject workerid="1">
  <filename>C:\Users\ds2057\Documents\Sample\dig_coll_2010.xls</filename>
  <filesize>31232</filesize>
  <ctime/>

```

- in Internet Explorer

```
<?xml version="1.0" encoding="UTF-8" ?>
<dfxml xmloutputversion="1.0">
- <metadata xmlns="http://md5deep.sourceforge.net/md5deep/" xmlns:xsi="http://www.w3.org/2001/XMLSchema-instance"
  xmlns:dc="http://purl.org/dc/elements/1.1/">
  <dc:type>Hash List</dc:type>
</metadata>
- <creator version="1.0">
  <program>MD5DEEP</program>
  <version>4.1</version>
- <build_environment>
  <compiler>GCC 4.7</compiler>
</build_environment>
- <execution_environment>
  <command_line>C:\Users\ds2057\Desktop\makeInventory\hashdeep\hashdeep.exe -e -r -v -d C:\Users\ds2057
  \Documents\Sample</command_line>
  <start_time />
</execution_environment>
</creator>
- <configuration>
- <algorithms>
  <algorithm name="md5" enabled="1" />
  <algorithm name="sha1" enabled="0" />
  <algorithm name="sha256" enabled="1" />
  <algorithm name="tiger" enabled="0" />
  <algorithm name="whirlpool" enabled="0" />
</algorithms>
</configuration>
- <fileobject workerid="1">
  <filename>C:\Users\ds2057\Documents\Sample\dig_coll_2010.xls</filename>
  <filesize>31232</filesize>
  <ctime />
  <mtime />
  <atime />
  <hashdigest type="MD5">ce65ec3b4642b3fddb9df6b30e48a38</hashdigest>
  <hashdigest type="SHA256">3108a54475a6f73c61f13c5d59291bd503b95dfb5387a7016807a9c60949c786</hashdigest>
</fileobject>
- <fileobject workerid="0">
  <filename>C:\Users\ds2057\Documents\Sample\Assessment_of_Risk_Factors.doc</filename>
  <filesize>65024</filesize>
  <ctime />
  <mtime />
  <atime />
  <hashdigest type="MD5">bf47c4bc65dbad360ed3e735cbb5a14</hashdigest>
  <hashdigest type="SHA256">e8b00d2a503d1b5fca3cfd4cae47a7ba1ab339573e327e37f2e00f0faeba154</hashdigest>
</fileobject>
```