

How to Export (Backup) Windows Mail Messages in Vista

To be safe you might want to backup your messages in Windows Mail before copying them to an external flash/hard drive. So if you want to back up messages to an external drive, you first have to backup to a temporary folder on your computer, and then copy this folder to an external drive. There is a known bug in Vista that does not allow to backup directly to an empty folder on an external drive.

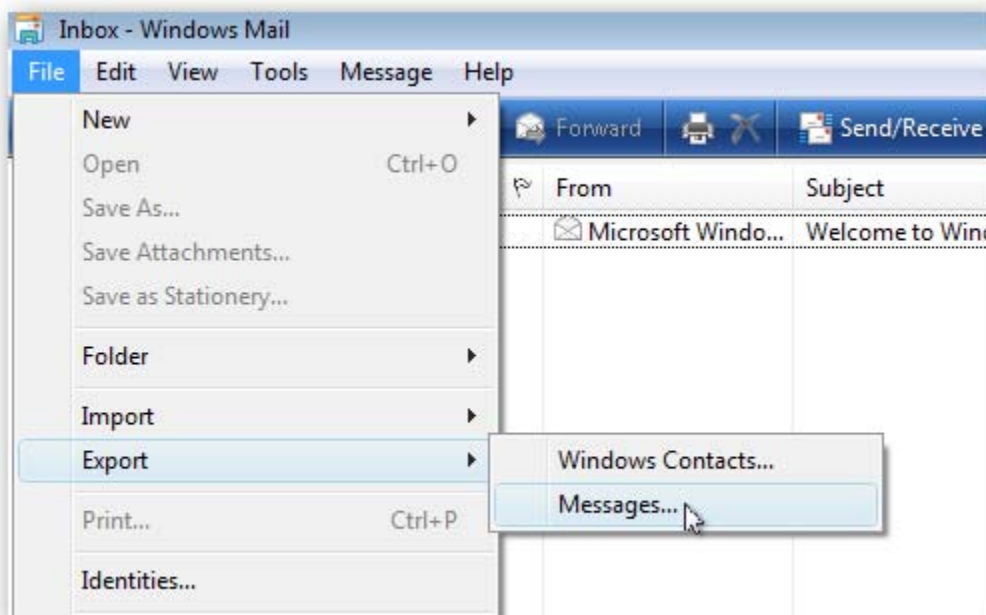
Backup Messages

1. Create a new empty folder at the location you want to backup your Windows Mail messages to.

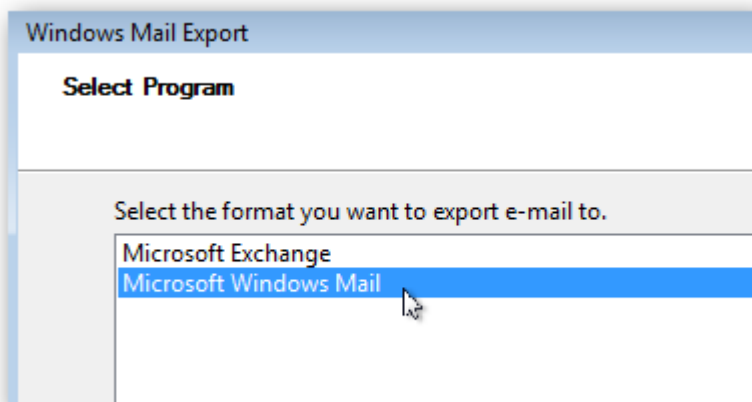
NOTE: For example, create a new empty folder named **Mail Backup** at **C:\Users*(user name)*\Desktop**.

2. Open Windows Mail.

3. Click on **File** and then **Export** and **Messages**.

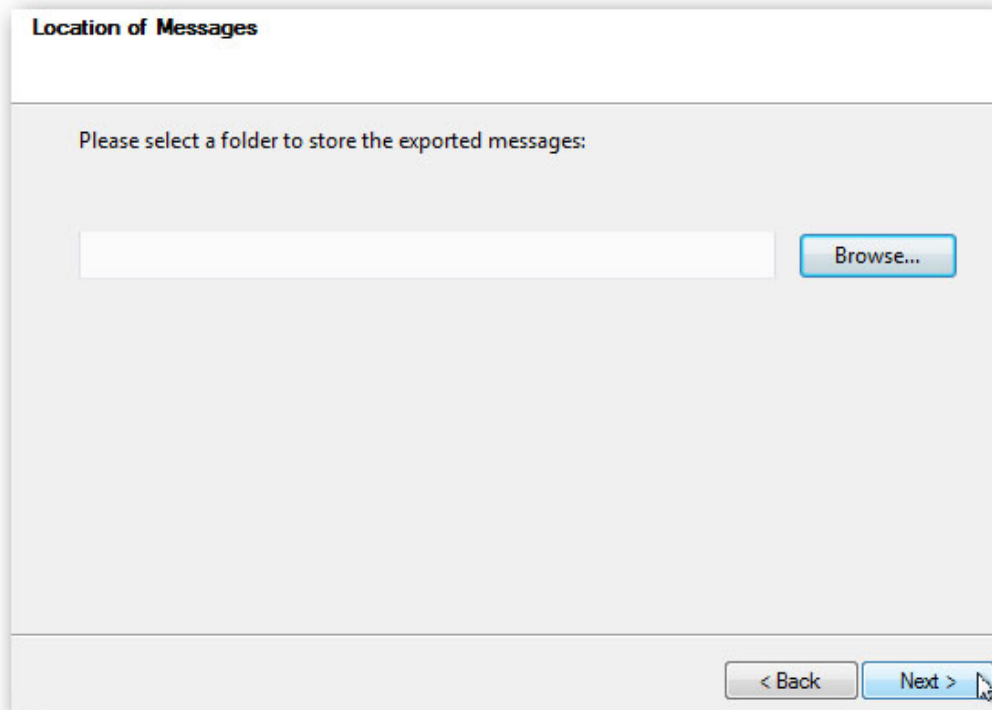


4. Click on **Microsoft Windows Mail** and click **Next**.



5. Click on **Browse**.

WARNING: You will only be able to Export into a selected **empty folder**.



Location of Messages

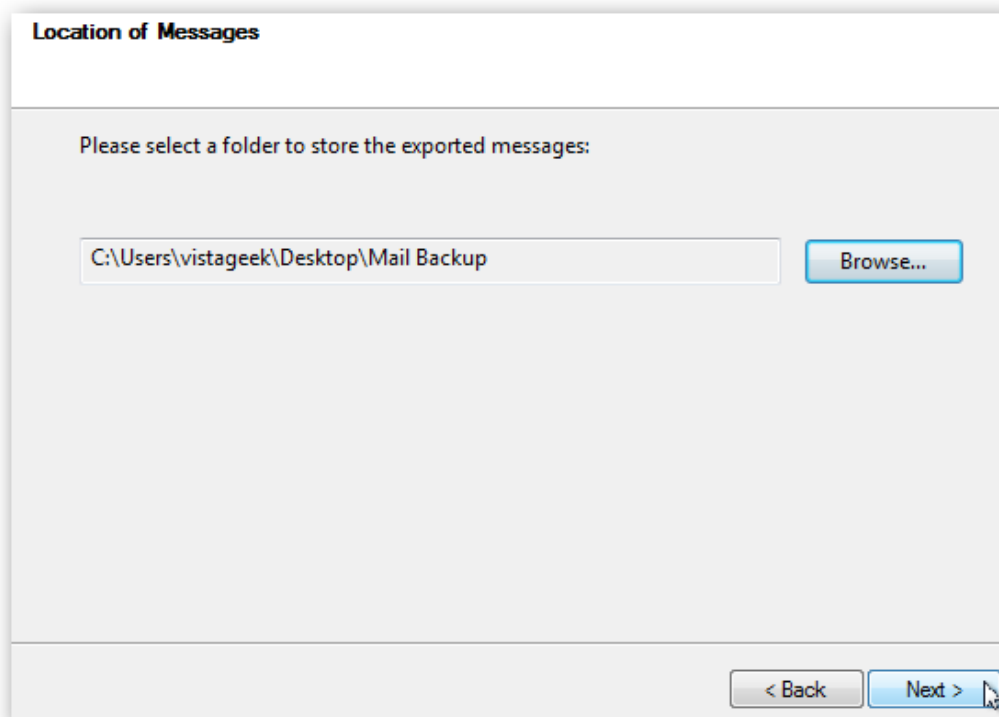
Please select a folder to store the exported messages:

Browse...

< Back Next >

6. Navigate to the location of your empty new folder (step 1) and highlight the folder, then click on **Select Folder**.

7. Make sure the **Export To location** is correct and click on **Next**.



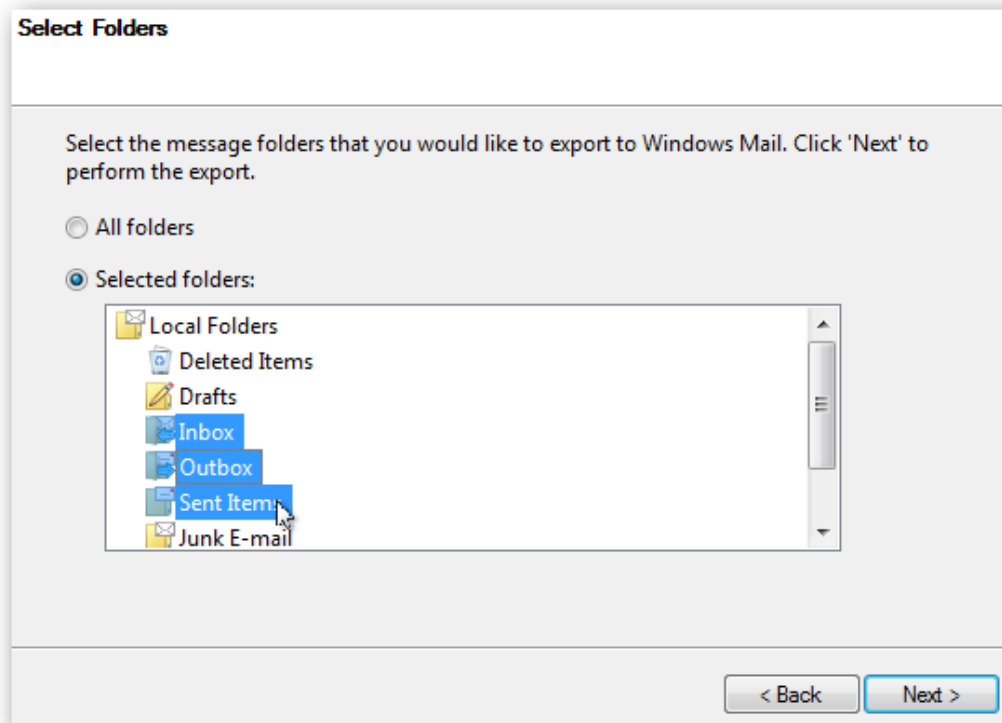
Location of Messages

Please select a folder to store the exported messages:

Browse...

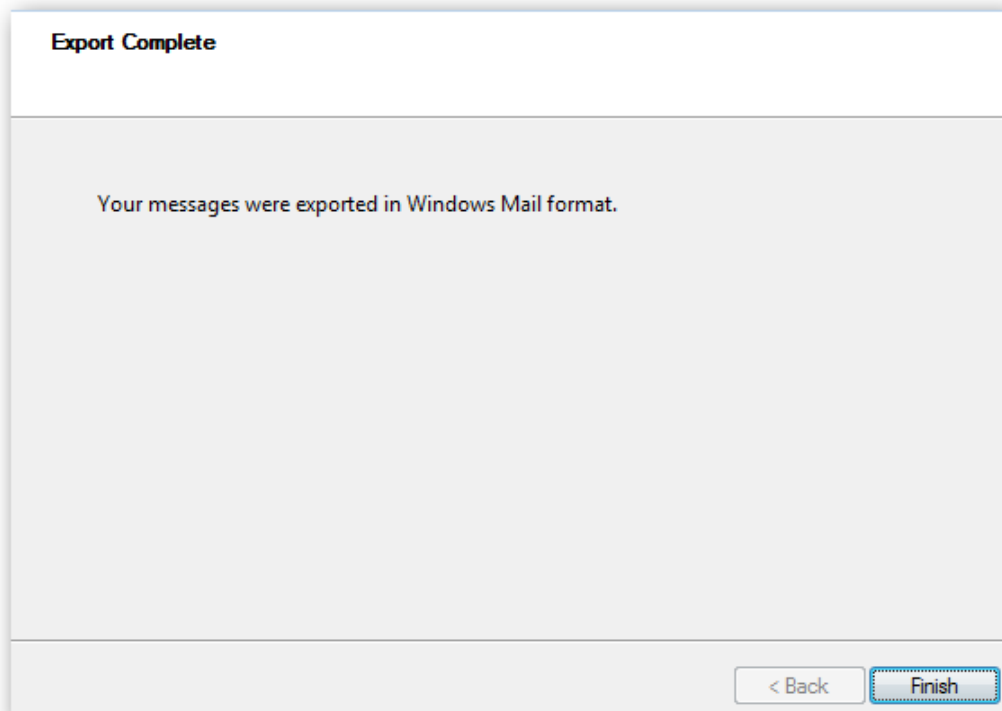
< Back Next >

8. You can choose to backup all folders (select **All folders**), or select **Selected folders**, hold the Ctrl key and click each folder you want to backup. After you are done, click on **Next**.



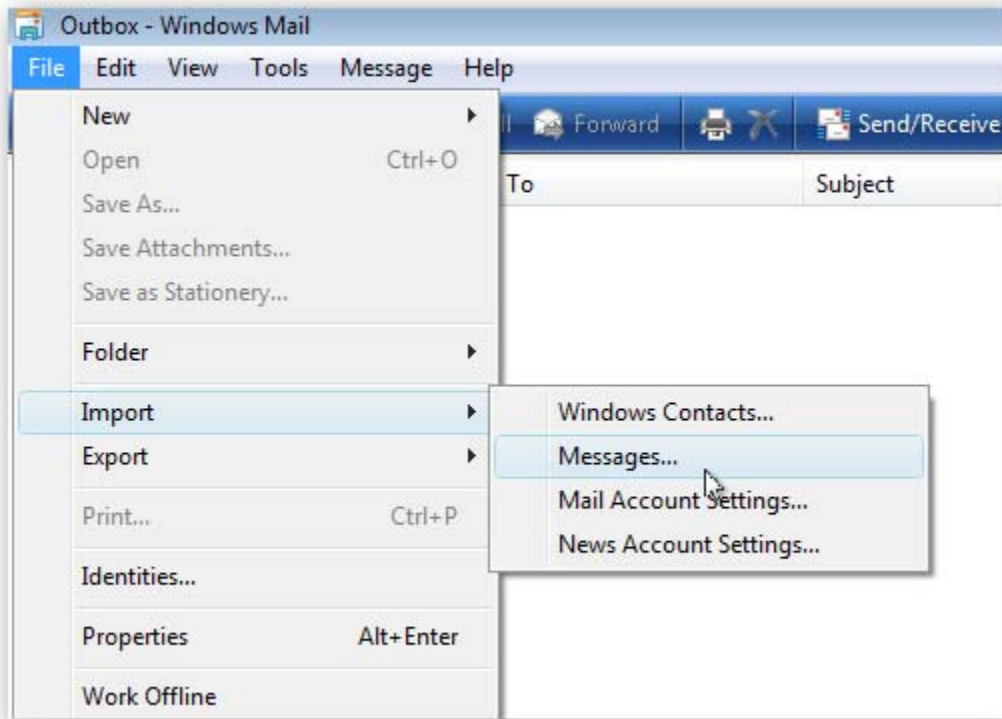
9. Click on **Finish**.

NOTE: Your messages have been exported to the selected location from step 1 and 6 above. You can save this exported folder to a CD or external drive to backup or use to transfer to another computer. If you cannot copy the exported folder for some reason, then place the exported folder in a ZIP file first and try again.



Restore Messages

If you need to restore the Messages, it is a simple import process.



Just follow the import wizard and point it to the backed up message files.