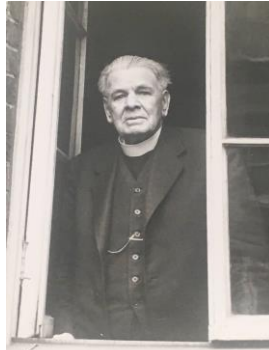


**The Burke Library at Union Theological Seminary,
Columbia University in the City of New York**

Union Theological Seminary Archives 1

Finding Aid for

Thomas Tiplady Papers, 1930-[1940]



Thomas Tiplady outside his Lambeth, UK residence [detail]. UTS: Thomas Tiplady Papers 1930-[1940]. Series 1, box 3, folder 2. The Burke Library at Union Theological Seminary, Columbia University in the City of New York.

Finding Aid prepared by: Rebecca Nieto, February 2017

With financial support from the Henry Luce Foundation and the E. Rhodes and Leona B. Carpenter Foundation

Summary Information

Creator: Thomas Tiplady, 1882-1967
Title: Thomas Tiplady Papers, 1930-[1940]
Inclusive dates: 1930-[1940]
Bulk dates: 1930
Abstract: British Methodist and hymnwriter; directed Lambeth Mission, London circa 1922-1955. Collection consists of the original annotated four-volume manuscript of Tiplady's *Hymns from Lambeth* (1930) presented to the Hymn Society of America in 1938, one volume of *Hymns and Prose*, and one photograph of Tiplady in front of his home in Lambeth, England.
Size: 3 boxes, 1.5 linear feet
Storage: Onsite storage
Repository: The Burke Library
Union Theological Seminary
3041 Broadway
New York, NY 10027
Email: burkespecial@library.columbia.edu

Administrative Information

- Provenance:** The exact provenance of these volumes is unknown. However, the manuscript was presented to the Hymn Society of America in 1938, and the photograph included in these materials was sent separately to the Burke Library for inclusion with the Tiplady collection. The collection in its entirety was housed in the Burke's Special Collections before being transferred to the Archives. The Tiplady Papers were among a large group of unprocessed material that was organized in 2016/2017 with the support of the Henry Luce Foundation and the E. Rhodes and Leona B. Carpenter Foundation.
- Access:** Archival papers are available to registered readers for consultation by appointment only. Please contact archives staff by email to burkespecial@library.columbia.edu, or by postal mail to The Burke Library address on page 1, as far in advance as possible. Burke Library staff is available for inquiries or to request a consultation on archival or special collections research.
- Access Restrictions:** The collection is unrestricted to readers. These volumes, however, are fragile at the spine and are brittle at the pages, necessitating great care in handling.
- Preferred Citation:** UTS1: Thomas Tiplady Papers, 1938, series #, box #, and folder #, The Burke Library at Union Theological Seminary, Columbia University in the City of New York.

Biography

Thomas Tiplady was a British Methodist well-known for his hymns, of which he wrote over 250 during his lifetime. He was born in Gayle, Wensleydale, North Yorkshire, England, and died January 7, 1967 in Lambeth, London, where he resided for over forty years. After briefly serving the Queen's Westminster Rifles in World War I, Tiplady lived briefly in the United States before returning to London. Back in Lambeth, Tiplady served as director of the Lambeth Mission in South London, which was regulated under the Methodist Church, and likely served there from 1922 to 1955.

Collection Scope and Content Note

The Tiplady Papers extend 1.5 linear feet across three boxes, and consist of the original manuscript of Tiplady's *Hymns from Lambeth (four volumes)*, published by Epworth Press in 1930, and the first volume of Tiplady's *Hymns and Prose*. This bound volume is signed by the author and consists of printed and handwritten hymns pasted into the leaves of the volume. It was originally presented to the Hymn Society of America on January 1 (Easter Day), 1938. The collection also consists of one photograph of Tiplady standing outside his home at 2 Flat 2 Chester Way, Lambeth, England, where he resided for much of his life. The photograph is undated; the date given was extrapolated from sources on Tiplady and when he was known to reside at this address. This collection is maintained in its original order by volume, and falls under a single series:

- **Series 1: Bound Hymns and Photograph, 1930-[1940]**

This series consists of four bound volumes of Tiplady's *Hymns from Lambeth* as they were presented to the Hymn Society. The title leaf of the first volume includes "Hymns

from Lambeth – First Part”, likely written in Tiplady’s own hand. Box 3 also includes a single photograph of Tiplady outside his Lambeth residence, and the first volume of Tiplady’s *Hymns and Prose*. The front pastedown includes an inscription that reads: “This is from the film *The Prodigal Son* in which Mr. Tiplady is the minister. He is speaking to the prodigal. The film was made by the Religious Film Society”.

Processing

Bound volumes were cleared of dust and placed in new acid-free folders and boxes. The photograph was encapsulated in a Mylar envelope.

Further Sources

“Thomas Tiplady” Biographical Sketch on hymnary.org.

Many of Tiplady’s texts have been digitized and are now in the public domain, and can be accessed in their entirety though Project Gutenberg or Hathi Trust by visiting the University of Pennsylvania’s online books [catalog](#).

There are mentions of Tiplady in Dorricott and Collins’ [*Lyric Studies: A Hymnal Guide Containing Biographic Sketches of the Authors, and Notes, Critical, Historical, and Illustrative, of Their Psalms and Hymns.*](#)

Contents list**Series 1: Hymns from Lambeth, 1930**

Series	Box	Folder	Contents
1	1	1	Hymns from Lambeth vol. 1, 1930
1	1	2	Hymns from Lambeth vol. 2, 1930
1	2	1	Hymns from Lambeth vol. 3, 1930
1	2	2	Hymns from Lambeth vol. 4, 1930
1	3	1	Hymns and Prose vol. 1, 193?
1	3	2	Photograph – Tiplady in Lambeth [194?]